



FELINE HCM CLINIC

Fighting Heart Disease in Cats by Early Detection of Cardiomyopathies

Hypertrophic cardiomyopathy (HCM) is the most common heart disease in cats affecting 1 in 6 cats. Although some cats will have a benign course, others develop serious complications (e.g. CHF, ATE). HCM has a long preclinical (occult) phase where cats are asymptomatic. Echocardiography is the only reliable diagnostic tool to detect HCM.

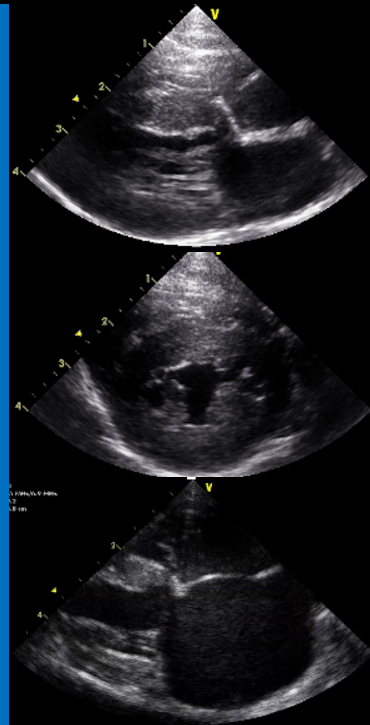
Our clinic aims to diagnose and monitor HCM in asymptomatic cats and identify cats at high-risk of heart failure and/or thromboembolism.

Cats seen at the HCM clinic will have the following investigations at a reduced cost:

- Echocardiography
- ECG
- Blood pressure measurement
- Blood tests (Urea/Crea, PCV, T4, Glu, cTnI)

Eligible Cats:

- Asymptomatic cats with suspicion of preclinical cardiomyopathy:
 - Arrhythmia
 - Gallop
 - Heart murmur
 - High NT-proBNP
 - Familial history of HCM



CONTACT US:
01223 337621
cardiology@vet.cam.ac.uk